

# Essential Range.

The Stylish Flat Pack Kitchen Collection.

2026

Design Your Dream Kitchen

**FREEDOM**  
KITCHENS

[freedomkitchens.com.au](http://freedomkitchens.com.au)

# Save with ready to assemble.



Welcome to style in the fast lane! The Essential Kitchen Range is our exciting collection of ready-to-assemble flat pack kitchens, perfect for those looking for a fast and affordable solution - without compromising style.

Offering exceptional value, at a range of affordable price points, you'll be delighted to receive your new flat pack kitchen ready for assembly and installation, just 10 business days after final payment.

**STYLISH. FAST. AFFORDABLE. ESSENTIAL.**



# Our process

## 6 steps to create your new kitchen.

### 1. Design appointment

One of our expert kitchen designers will visit you in your home to work through your measurements, style, needs and budget. You'll be shown colours and material swatches to make selections and receive on the spot pricing.

### 2. Deposit

Simply pay the 10% deposit to get started.

### 3. Site check

Once we receive all your appliance details a check measurer will come to your home to measure the site against the plans and chosen appliances, ensuring all details are accurate.

### 4. Progress payment

Following your site check your 30% progress payment can be made through our online portal.

### 5. Final plans and costing approval

After the progress payment is received, the final plans and price will be supplied for your sign-off. You can view your final plans and communicate with us at any time via 'my kitchen', our online communication portal.

### 6. Delivery

After final payment (60%) is made, you can expect your Essential Kitchen to be delivered to your door in 10 business days. A beautiful new kitchen doesn't get any simpler than this!

# Let's talk Designer visit.

Getting started is simple. Essential Range includes a free design consultation either at your home or in one of our showrooms with plans, at a time that suits you. Whether you're brimming with ideas or have a lot of questions, we'll work with you to plan the perfect kitchen for your needs.



## **At your appointment, your designer will:**

- Discuss your needs and ideas around style and functionality
- Share the latest in international and local kitchen design trends
- Show you colour options and material swatches
- Measure your kitchen space and note any special requirements
- Provide on the spot pricing based on your kitchen preferences and discuss a range of finance options.

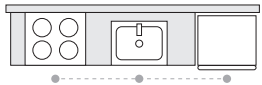
**When you're ready to go ahead, we'll start drawing up your kitchen plans, to make sure you're 100% happy with the final design.**

# A layout to love

## Making the most of your space.

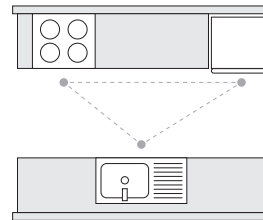
### Get to know some classic kitchen layouts.

When you're planning a kitchen, keep in mind the 'Working Triangle'. It's the distance between the kitchen spaces you use most, such as the stove, sink and fridge areas. See which one works best for you.



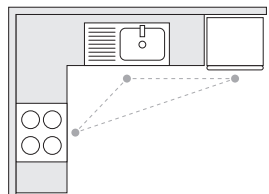
#### The straight line

Pressed for room? This design makes the most of your bench space, making it ideal for apartments and smaller houses. Appliances are tucked away under the counter. Ample shelving sits above. It's compact, neat and yet roomy enough to accommodate even the most creative cook.



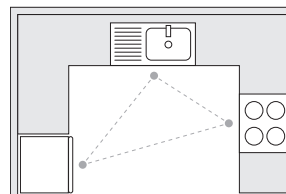
#### The galley

Want more workspace? Two long counters give you ample room for food prep, serving and storage. You have the option to add bar stools at one end of the island, creating a breakfast area for the kids or a space for guests to mingle in while you're busy in the kitchen.



#### The L-shape

Open plan area? This popular layout gives you bench space on two adjoining walls, freeing up room for a dining table or open-plan entertaining.



#### The U-shape

Loads of space? This layout gives you more bench space and cupboard storage. Ideal for larger rooms, bigger families and budding chefs who enjoy a larger bench area and want extra storage for kitchen gadgets.



WHITE CATHERINE (D)



CAESARSTONE® NOBLE GREY (B)

\*Handles not included in the Essential Range



CATHERINE WHITE SATIN (D)



CAESARSTONE® EMPIRA WHITE (B)



4 - F - 11



CATHERINE WHITE SATIN (D)

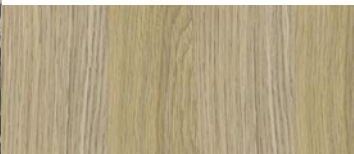


CAESARSTONE® EMPIRA WHITE (B)

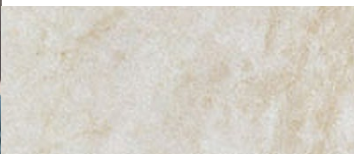


5-F-15

JASPER SATIN (D)



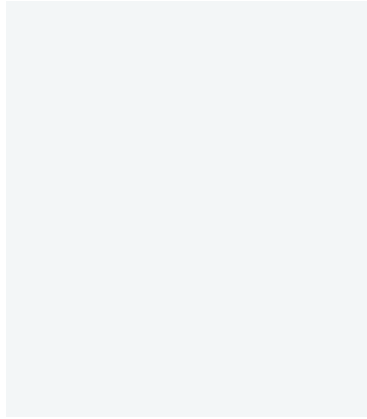
PARIS (D)



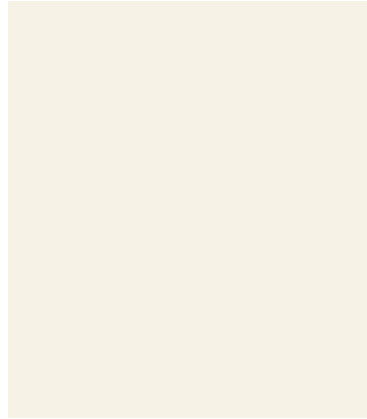
TAJ MAHAL SMOOTH (B)



# Stylish selections Cabinets & Doors.



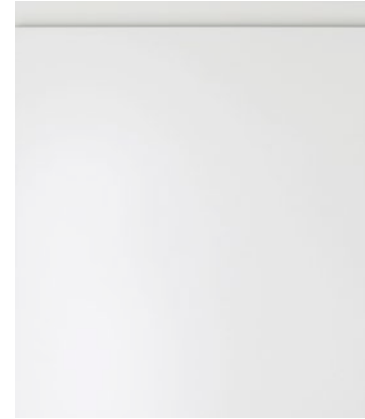
SNOW (SATIN)



SAHARA (SATIN)



LILY (GLOSS)



JASPER (SATIN & GLOSS)



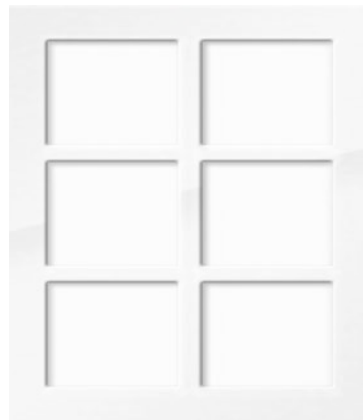
PARIS (MATT)



CATHERINE



CATHERINE FRAME



LILY & JASPER FRAME

# Stylish selections Laminate Benchtops.



CALACUTTA GREY SMOOTH



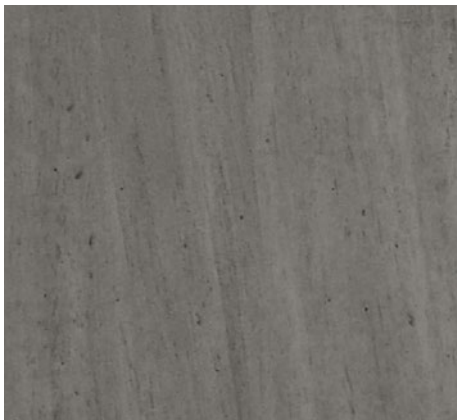
TAJ MAHAL SMOOTH



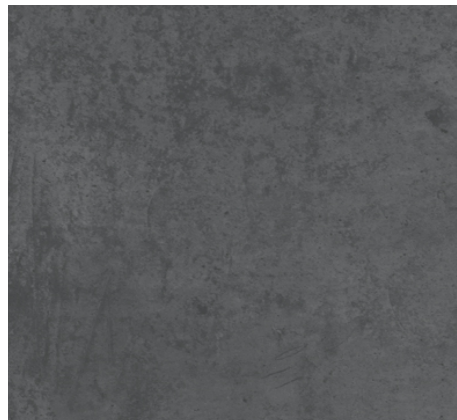
PORTLAND STONE SMOOTH



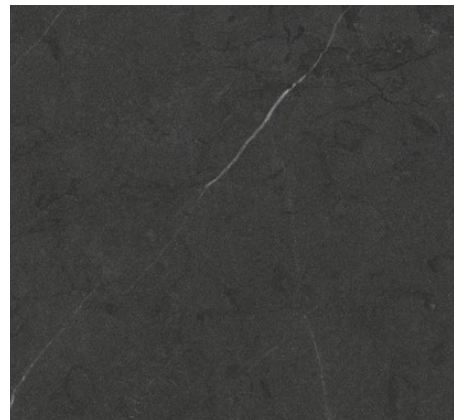
GREY CEMENT MATERA



TUNISIA STONE MATERA



DARK CEMENT MATERA



ATHENA STONE MATERA



PRIME OAK MATT

# Finishing touches Handles & Accessories.

## Handles

The right handles will make all the difference in your new kitchen, completing the style you wish to achieve. Choose from our wide selection below:



4-F-04



4-F-10



4-F-07



4-F-08



4-F-06



4-F-09



4-F-13



4-F-11



4-F-12



4-F-05



5-F-10



5-F-12



5-F-08



5-F-09



5-F-11



5-F-13



5-F-14



5-F-15



7-F-15



7-F-16

# Accessories

Sometimes it's the things that you don't see which make the biggest difference to how well your kitchen works for you. Ask our designers about our range of accessories that will transform your space, including cutlery drawers, pull-out pantries, bins and lighting solutions.



## Alto Drawer System

The Alto Drawer System offers an affordable solution

coupled with quietness, smoothness and ease of use



## Soft Close Pull-out Pantry

- 6 Adjustable baskets
- Door mounted
- Full extension pantry allows optimum access to back of the unit



## Lemans blind corner shelf system

- Corner pull out for return base cabinets
- Arena style shelves
- Smooth swing action brings entire cabinet shelves out of the cupboard allowing easy access to contents
- Features a non slip tray



**Cutlery Tray  
Silver**



**Cutlery Tray  
Graphite**



**Cutlery Tray  
White**

# Take the next step.



## Book your free kitchen design appointment today 1800 113 733

A kitchen designer will visit you in your home, at a time that suits you, including after hours or on the weekend. During your appointment your kitchen designer will:

- Measure your kitchen
- Discuss your style, needs and budget
- Show you colours and material swatches
- Provide on the spot pricing, special offers and interest free finance options.

## Ask about our 36 month interest free offer!\*

Visit [freedomkitchens.com.au/offers/finance](https://freedomkitchens.com.au/offers/finance)

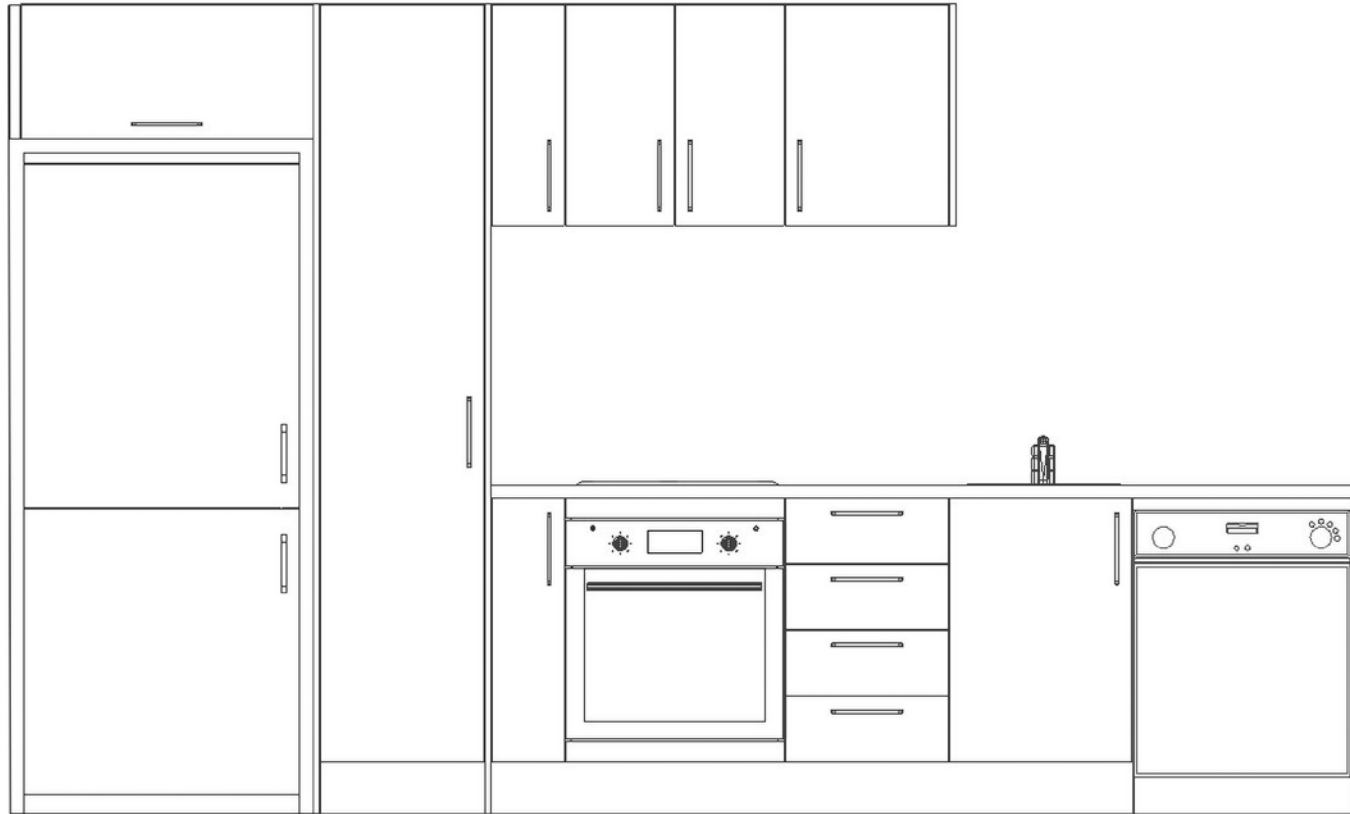
Apply for interest free finance online before you plan your kitchen and enjoy:

- Rapid approval - standard applications can be made during the design appointment
- Flexibility - borrow up to \$30,000
- 24/7 online account access

\*Annual fee and T&Cs apply.

# INSTALL YOURSELF

## 9 cabinet kitchen from \$6,763<sup>^</sup>



### Includes

- Australian made cabinets
- Soft full extension drawer runners
- Handles and kickboard
- Laminate benchtop
- Flatpack solid 16mm construction including back panel
- Soft close drawers
- User friendly instruction booklet
- Dowel and screw construction
- 7 year warranty on all cabinetry
- Cutlery tray and bin
- Measure and site check
- Delivery to your home

### Excludes

- Any trades or installation
- Appliances, sink and tap

Wall Filler	Wall Fridge 800mm	Tall Panel	Pantry 450mm	Tall Panel	Wall 200mm	Rangehood 600mm	Wall 450mm	Wall Panel	Dishwasher Space 600mm	Floor Panel
					Floor 200mm	Under Bench Oven 600mm	4 Drawer 450mm	Floor 500mm		

<sup>^</sup>The price quoted is for the kitchen design shown above and includes the supply of all 'Essential Range' cabinets, doors, hinges, drawer runners, handles, bins, cutlery drawer, and laminate benchtop. The price excludes appliances, sinks, taps, delivery, installation, glass splashbacks and stone benchtops.

# Showroom Locations.

For more information or to book your design appointment, visit our website or call **1800 113 733**.

## NSW

### Balgowlah

247-249 Condamine St  
NSW 2093  
Ph: (02) 8006 5547

### Belrose

Belrose Super Centre,  
ShopGA 4-6 Niangala Close  
Belrose, NSW, 2085  
Ph: (02) 8006 5504

### Caringbah

#### Essential Display

Caringbah Home,  
L20A/220 Taren Point Road  
Caringbah, NSW, 2229  
Ph: (02) 8559 0120

### Castle Hill

#### Essential Display

Hills SuperCentre,  
65A - 16 Victoria Avenue  
Castle Hill, NSW, 2154  
Ph: (02) 8806 3215

### Kotara

Kotara Home Centre  
150 Park Avenue  
Ph: (02) 4001 0941

### Moore Park

#### Essential Display

SupaCenta  
Cnr Todman Ave & Sth Dowling St  
Ph: (02) 8006 5545

### West Gosford

Tenancy T01 392-398 Manns Road  
West Gosford, NSW, 2250  
Ph: (02) 4304 5717

## VIC

### Essendon

Essendon Homemaker Hub  
120 Bulla Road  
VIC 3040  
Ph: (03) 9005 2201

### Frankston

#### Essential Display

Frankstone Power Centre,  
1A - 111 Cranbourne Rd  
Frankston, VIC, 3199  
Ph: (03) 8797 0253

### Geelong

#### Essential Display

Geelong Gate Home Maker Centre  
Shop 1A, 470-510 Princes Hwy,  
Geelong, VIC, 3214  
Ph: (03) 5215 0476

### Moorabbin

#### Essential Display

1A - 1000 Nepean Highway  
VIC 3189  
Ph: (03) 9005 2235

### Nunawading

260A Whitehorse Road  
VIC 3131

Ph: (03) 8833 7223

### Richmond

#### Essential Display

Victoria Gardens Shopping Centre  
620 Victoria Street  
VIC 3121  
Ph: (03) 9005 2199

## QLD

### Aspley

Homemaker City  
815 Zillmere Rd  
QLD 4034  
Ph: (07) 3102 2541

### Jindalee

#### Essential Display

Jindalee Home  
34 Goggs Road  
QLD 4074  
Ph: (07) 3102 2623

### Southport

#### Essential Display

The Brick Works,  
17/107 Ferry Road  
Southport, QLD, 4215  
Ph: (07) 5551 0283

### Windsor

#### Essential Display

The Windsor Centre  
Cnr Lutwyche Rd &  
Newmarket Rd  
QLD 4030  
Ph: (07) 3077 6943

STYLISH. FAST.  
AFFORDABLE. ESSENTIAL.

# 1800 113 733

[freedomkitchens.com.au](http://freedomkitchens.com.au)

# FREEDOM KITCHENS